

Warning:

- 1-Ride-on car is designed for children up 12-36 months old. Rider's weight must not exceed 25kgs, as there is insufficient strength to support overweight.
- 2-Product is designed to seat 1 child as a time to avoid injuries.
- 3-Parental guidance and supervision are strongly advised to ensure safe riding.
- 4-Adult assembly and installation of all parts are required to ensure safety.
- 5-Batteries to be handled by adults.
- 6-Take care of riding and avoid going near streets,crossroads,all traffic areas,swimming pools,and stairs.
- 7-Without regular check of the product,it will cause overturn or fall.
- 8-Check to see occasionally that the nut and bolt on the steering wheel is tight and secure.
- 9-Dangers may present if the product is not correctly assembled.
- 10-Shoes must be worn in use.

Battery Handling:

- 1-Battery must be handled by adults only.
- 2-Always remove exhausted batteries.
- 3-Use AAA size batteries only.
- 4-Alkaline batteries are recommended.
- 5-Always remove batteries when the unit is not going to be used for an extended period of time.
- 6-When replacing new batteries,always replace all batteries.
- 7-Do not mix old and new batteries.
- 8-Do not mix Alkaline,Standard(Carbon-Zinc),or Rechargeable(Nickel-Cadmium)batteries.
- 9-Do not dispose of batteries in fire,batteries may explode or leak.
- 10-Non-rechargeable batteries are not to be recharged.
- 11-Rechargeable batteries are to be removed from the toy before being charged.
- 12-Rechargeable batteries are only to be charged under adult supervision.
- 13-Batteries are to be inserted with the correct polarity
- 14-The supply terminals are not to be shortcircuited

Bandits and Angels
Item No: BA8863/BA8864/BA8865
Activity Ride-On

Instructions Manual

WARNING
ADULT ASSEMBLY
REQUEST.



COMPONENTS LIST

1.Body 1pc 	2.Steering wheel 1pc 
3.Backrest 1pc 	4.J-shaped stick 1pc 

„Mercedes-Benz“ and  are the intellectual property of Mercedes-Benz Group AG. They are used by Ningbo Prince Toys Co., Ltd under license.
 Manufacturer: Dutch Bandits BV, Waterwinweg 9, 7572 PD Oldenzaal, The Netherlands
www.dutchbandits.com / info@dutchbandits.com

INSTRUCTIONS

Step 1



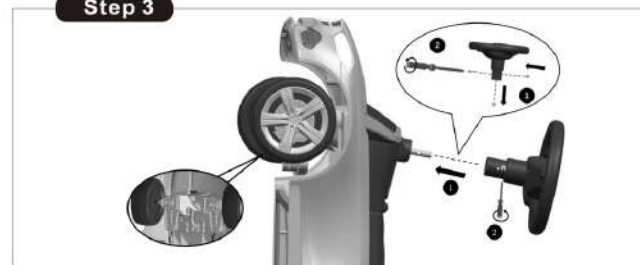
1.Install the J-shaped stick at the assigned location as picture.

Step 2



2.Loosen the bolt and the nut in the steering wheel by a screwdriver (not included).

Step 3



3.Hold the J-shaped stick at the bottom,then place the steering wheel over the J-shaped stick,insert the bolt and tighten the nut with a screwdriver(not included).

Step 4



4.Insert the backrest into the rear of the body,be certain the backrest in completely seated.

BATTERY CHANGE



How to exchange the battery.
 -Loosen the screws with a screwdriver.
 -Put 2AAA batteries in the battery house.
 -Then tight the screw with a screwdriver.